



# 武汉智立恒通电子技术有限公司

## WUHAN CHENLI-ION ELECTRONIC TECHNOLOGY CO.,LTD

Focus on the application of lithium-ion battery protection and battery management solutions

# Lithium electric protection device operation guidelines



"赛恩尔," and "CNL CARING" are wuhan intelligence hengtong electronic technology co., LTD  
mainly identify trademarks, counterfeit will investigate!

*You "cell", we pay attention to care!*

\*\*\*\*\*

## 产品主要依据并符合标准

GB/T18287-2000 GB/T11137-2011

## 中国有害物质限定使用规定 (RoHS)

部件名称	铅 (Pb)	汞 (Hg)	镉 (Cd)	六价铬 (Cr)	多溴联苯	多溴二苯醚
电阻	X					
电容	X					
PCB	X					
集成 IC	X					
MOSFET	X					
二三极管	X					
辅助材料	X					

Protect the environment, you are my responsibility!

## Proper nouns

BAT - negative abbreviated below B - in total for batteries

PACK - for charger cathode abbreviation for P - below

PACK the positive below abbreviated as P + + for the charger

BAT the positive below abbreviated as B + + total for batteries

DGS - for discharge cathode

CHG - for charging the cathode

Of series batteries group of B1 + since B - one of the first cell of the anode

B2 + -- -- -- Bn + for series batteries group every single cell of the anode

### Operation guide here

Figure1 : preparation



Figure2 : Batteries detect ribbon cable and batteries group in turn connected in sequence

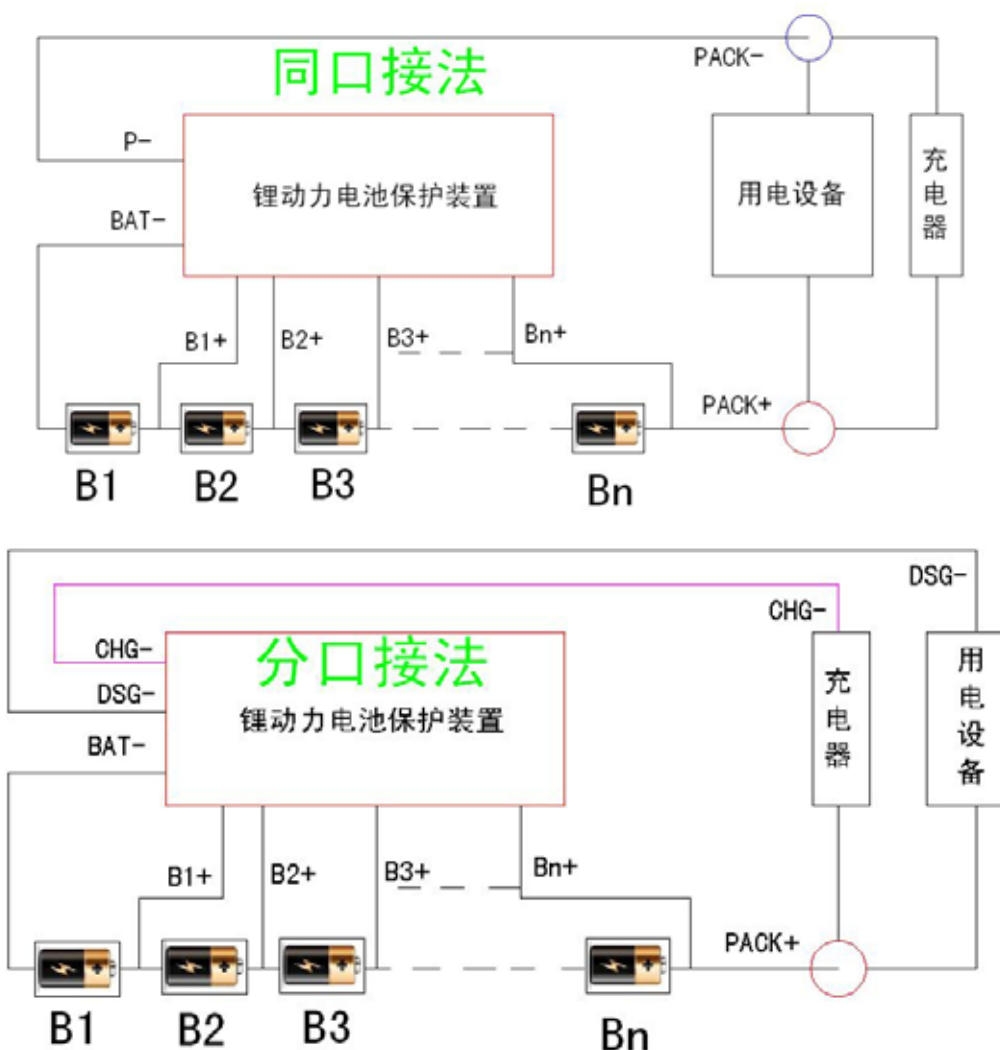


Figure5 : Will connect good batteries detect port and insert row line protection device detection

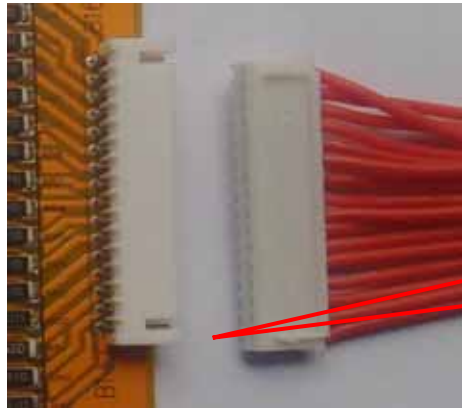


Figure6 : Measuring batteries group plus or minus the total voltage and record

Figure7 : Measured discharge of plus or minus the total output voltage protection device and record



Figure8 : Comparing figure 6 and figure 7 record voltage consistency

Figure9 : The charger connected to the charging protection device is negative charge



Use gaskets or insulation can work with gelatin sponge or barley paper insulation



## Matters needing attention and troubleshooting

1. The ribbon cable is corresponding batteries in series sequence, sequence without corresponding to cause discharge loop closure, which batteries do not accord with total pressure protection device output total pressure
2. During the welding process can't have icicles, tin beads, tin slag, such as foreign body on protection, so as not to cause the battery short-circuited cause safety accidents
3. When welding iron may not come into contact with the plate is welded components, also should pay attention to the temperature of the soldering iron.
4. After all the external wiring connections, right after the measured voltage is normal, need to use the charger to activate.
5. After the protective device connected to batteries, can not use hand to touch the protection device, in order to avoid damage of human body static electricity protective device.
6. The battery combination operation has been completed, batteries must be insulation treatment, in order to avoid wire mutual conduction everywhere, or short circuit with external devices.